



# TIIG

INJURY SURVEILLANCE IN THE NORTH WEST OF ENGLAND

## Injury attendances to Stepping Hill Emergency Department

### April 2012 to March 2013

This report summarises recorded injury attendances to Stepping Hill Emergency Department (ED) between April 2012 and March 2013.

Between April 2012 and March 2013 there were 34,659 injury attendances to Stepping Hill ED. Males accounted for over half (53%) of all attendances. The month with the highest injury attendances was May (n=3,286) with February having the lowest attendances (n=2,560) (**Figure 1**). The majority (63%) of attendances did not have a specific injury group recorded. Of the specified injury groups, falls (12%) accounted for the highest proportion followed by sports injury (11%), road traffic collision (RTC) (6%) and assault (3%) (**Table 1**).

For all injuries, the highest proportion of attendances were for persons aged 5 to 19 (25%) and 20 to 34 (22%) years (**Figure 2**). Over half (54%) of fall attendees were aged 65 or over. Nearly half (45%) of assault attendees were aged 20 to 34 years. Almost four in ten (38%) of RTC attendees were aged 20 to 34 years (**Figure 3**).

The majority (86%) of attendees were white. Of the remaining attendees 12% were recorded as not stated (**Table 2**).

The disposal of a patient can give an indication of the severity of the injuries sustained. Almost six in ten (59%) of attendees were discharged, nearly three in

ten (28%) were referred, and 11% were admitted (**Table 3**).

**Table 4** shows the arrival methods of attendees at Stepping Hill ED. Close to three quarters (73%) arrived by car and 19% by ambulance.

**Table 5** presents data for assault attendees to Stepping Hill ED. The majority of attendees were male (69%) and 45% were aged 20 to 34 years. Over a third (36%) of assault attendances arrived by ambulance.

**Figure 1: Stepping Hill ED: Total injury attendances by gender and month, April 2012 to March 2013**



**Table 1: Stepping Hill ED: Total injury attendances by injury group and month, April 2012 to March 2013**

| Injury group     | Apr         | May         | Jun         | Jul         | Aug         | Sep         | Oct         | Nov         | Dec         | Jan         | Feb         | Mar         | Total        | %          |
|------------------|-------------|-------------|-------------|-------------|-------------|-------------|-------------|-------------|-------------|-------------|-------------|-------------|--------------|------------|
| Other injury     | 1881        | 2099        | 1885        | 2037        | 1882        | 1864        | 1875        | 1608        | 1644        | 1733        | 1576        | 1700        | 21784        | 63         |
| Fall             | 311         | 339         | 281         | 330         | 299         | 383         | 360         | 397         | 365         | 366         | 349         | 450         | 4230         | 12         |
| Sports injury    | 329         | 391         | 295         | 301         | 291         | 433         | 365         | 323         | 194         | 248         | 314         | 379         | 3863         | 11         |
| RTC              | 175         | 191         | 198         | 173         | 198         | 192         | 183         | 186         | 160         | 161         | 147         | 157         | 2121         | 6          |
| Assault          | 91          | 128         | 112         | 111         | 81          | 105         | 111         | 79          | 118         | 95          | 74          | 96          | 1201         | 3          |
| Bites and stings | 49          | 67          | 76          | 119         | 112         | 79          | 49          | 38          | 41          | 35          | 34          | 43          | 742          | 2          |
| Burns and scalds | 54          | 71          | 51          | 70          | 65          | 42          | 62          | 53          | 60          | 60          | 66          | 64          | 718          | 2          |
| <b>Total</b>     | <b>2890</b> | <b>3286</b> | <b>2898</b> | <b>3141</b> | <b>2928</b> | <b>3098</b> | <b>3005</b> | <b>2684</b> | <b>2582</b> | <b>2698</b> | <b>2560</b> | <b>2889</b> | <b>34659</b> | <b>100</b> |

**Figure 2: Stepping Hill ED: Total injury attendances by age group and month, April 2012 to March 2013**

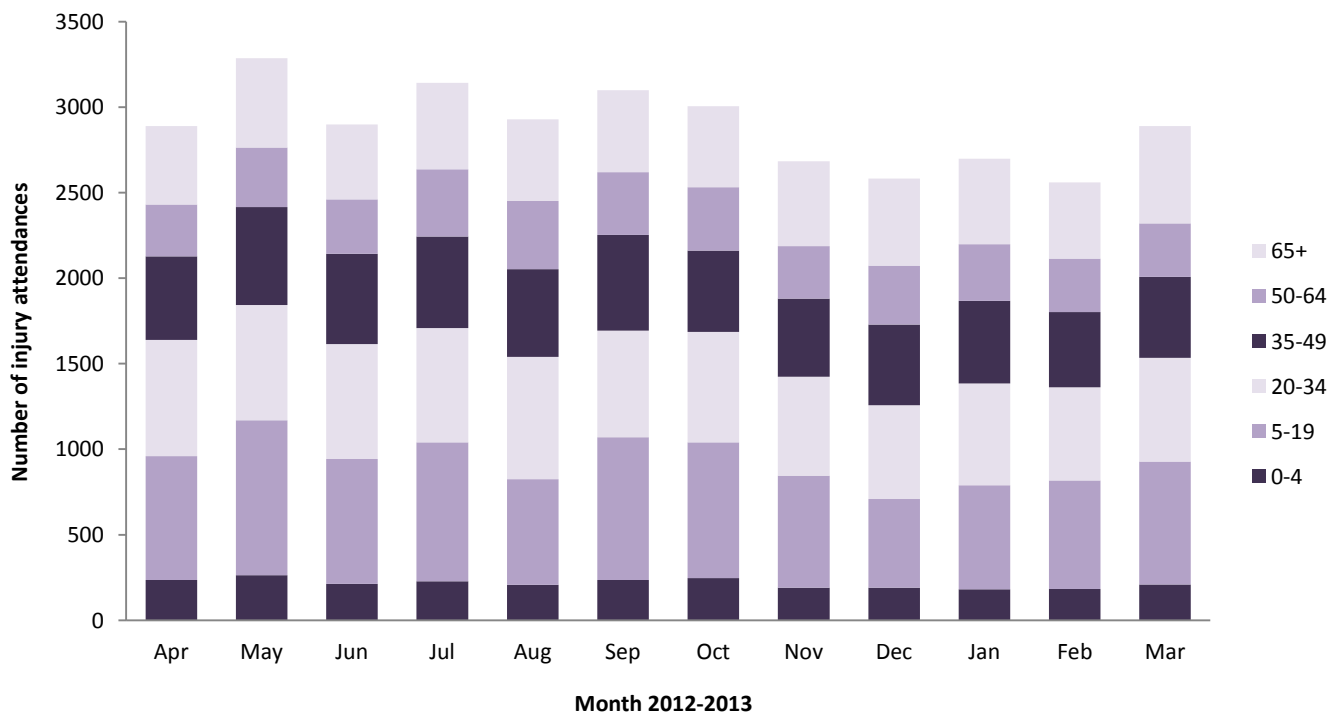


Figure 3: Stepping Hill ED: Total injury attendances by age group and injury group, April 2012 to March 2013

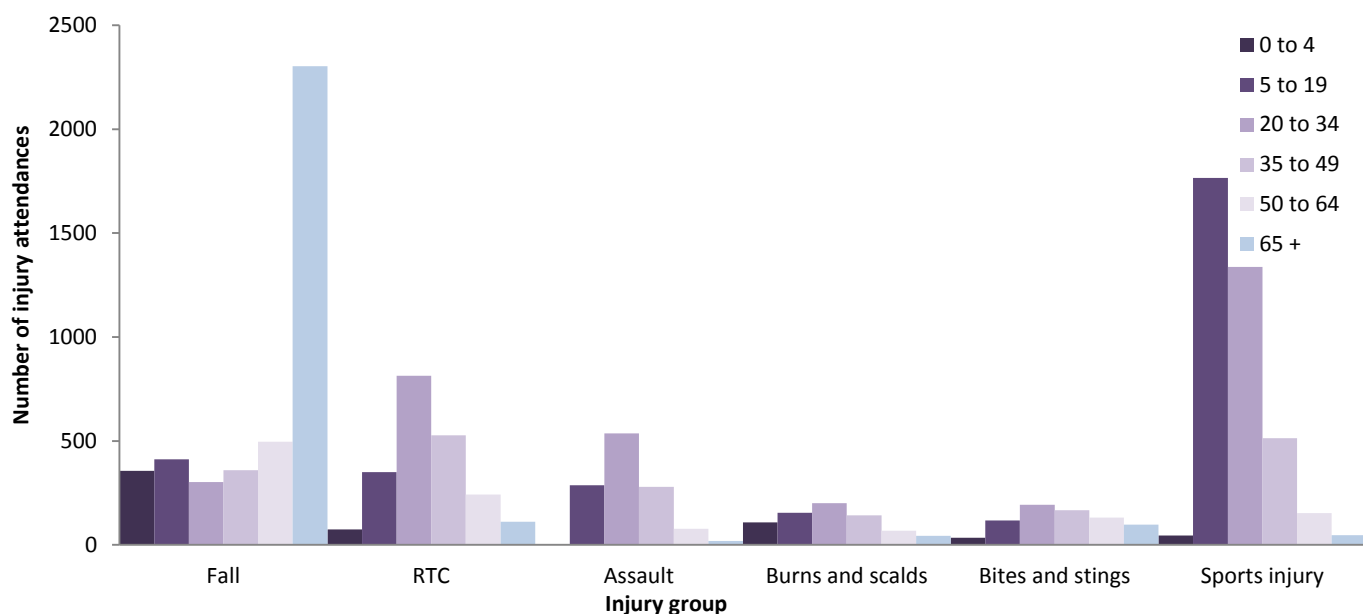


Table 2: Stepping Hill ED: Total injury attendances by ethnicity and month, April 2012 to March 2013<sup>1</sup>

| Ethnicity                  | Apr  | May  | Jun  | Jul  | Aug  | Sep  | Oct  | Nov  | Dec  | Jan  | Feb  | Mar  | Total | %   |
|----------------------------|------|------|------|------|------|------|------|------|------|------|------|------|-------|-----|
| White                      | 2471 | 2798 | 2455 | 2697 | 2470 | 2647 | 2555 | 2321 | 2243 | 2299 | 2219 | 2497 | 29672 | 86  |
| Not stated                 | 358  | 421  | 378  | 378  | 407  | 385  | 389  | 298  | 283  | 332  | 286  | 324  | 4239  | 12  |
| Pakistani                  | 13   | 16   | 16   | 19   | 14   | 15   | 15   | 11   | 10   | 17   | 11   | 17   | 174   | 1   |
| Mixed                      | 10   | 15   | 12   | 21   | 9    | 10   | 18   | 15   | 7    | 13   | 13   | 16   | 159   | 0   |
| Any other Asian background | 9    | ***  | 14   | 9    | 7    | 9    | ***  | 8    | 9    | 10   | 10   | ***  | 97    | 0   |
| Any other ethnic group     | 6    | 11   | 8    | ***  | ***  | 14   | 6    | 8    | 5    | <10  | 6    | 8    | 84    | 0   |
| Indian                     | 6    | 7    | ***  | 5    | 8    | 8    | 7    | 9    | 8    | 10   | ***  | 9    | 83    | 0   |
| Black                      | 8    | 8    | 6    | ***  | 6    | <10  | 6    | <10  | 5    | 8    | 9    | 7    | 77    | 0   |
| Chinese                    | <10  | 5    | ***  | 6    | ***  | ***  | ***  | 5    | 5    | ***  | ***  | ***  | 47    | 0   |
| Bangladeshi                | ***  | ***  | ***  | ***  | ***  | 0    | ***  | ***  | 7    | 0    | ***  | ***  | 27    | 0   |
| Total                      | 2890 | 3286 | 2898 | 3141 | 2928 | 3098 | 3005 | 2684 | 2582 | 2698 | 2560 | 2889 | 34659 | 100 |

Table 3: Stepping Hill ED: Total injury attendances by method of disposal and month, April 2012 to March 2013

| Disposal           | Apr  | May  | Jun  | Jul  | Aug  | Sep  | Oct  | Nov  | Dec  | Jan  | Feb  | Mar  | Total | %   |
|--------------------|------|------|------|------|------|------|------|------|------|------|------|------|-------|-----|
| Discharged         | 1801 | 2058 | 1694 | 1906 | 1698 | 1909 | 1813 | 1635 | 1465 | 1513 | 1431 | 1557 | 20480 | 59  |
| Referral/follow-up | 785  | 893  | 879  | 905  | 866  | 876  | 920  | 813  | 679  | 741  | 717  | 786  | 9860  | 28  |
| Admitted           | 273  | 297  | 287  | 295  | 319  | 285  | 236  | 214  | 417  | 423  | 388  | 524  | 3958  | 11  |
| Other              | 31   | 38   | 38   | 35   | 45   | 28   | 36   | 22   | 21   | 21   | 24   | 22   | 361   | 1   |
| Total              | 2890 | 3286 | 2898 | 3141 | 2928 | 3098 | 3005 | 2684 | 2582 | 2698 | 2560 | 2889 | 34659 | 100 |

Table 4: Stepping Hill ED: Total injury attendances by arrival mode and month, April 2012 to March 2013<sup>1</sup>

| Arrival mode     | Apr  | May  | Jun  | Jul  | Aug  | Sep  | Oct  | Nov  | Dec  | Jan  | Feb  | Mar  | Total | %   |
|------------------|------|------|------|------|------|------|------|------|------|------|------|------|-------|-----|
| Car              | 2156 | 2406 | 2166 | 2280 | 2083 | 2300 | 2239 | 1936 | 1777 | 1901 | 1876 | 2077 | 25197 | 73  |
| Ambulance        | 516  | 601  | 515  | 597  | 563  | 584  | 496  | 556  | 592  | 555  | 475  | 585  | 6635  | 19  |
| Bus              | 80   | 87   | 66   | 106  | 96   | 80   | 91   | 84   | 66   | 84   | 72   | 88   | 1000  | 3   |
| Taxi             | 62   | 84   | 73   | 62   | 75   | 59   | 82   | 45   | 56   | 68   | 63   | 58   | 787   | 2   |
| Walked           | 44   | 67   | 47   | 61   | 79   | 55   | 62   | 38   | 52   | 58   | 42   | 51   | 656   | 2   |
| Other            | 13   | 12   | 7    | 16   | 17   | 8    | 19   | 15   | 21   | 15   | 21   | 11   | 175   | 1   |
| Police           | <20  | 22   | 20   | 17   | 10   | 9    | 10   | 6    | <20  | 13   | 7    | 13   | 161   | 0   |
| Bicycle          | 0    | <10  | ***  | ***  | ***  | ***  | ***  | ***  | 0    | ***  | ***  | ***  | 26    | 0   |
| Public transport | ***  | ***  | ***  | ***  | ***  | ***  | ***  | ***  | ***  | ***  | ***  | ***  | 22    | 0   |
| Total            | 2890 | 3286 | 2898 | 3141 | 2928 | 3098 | 3005 | 2684 | 2582 | 2698 | 2560 | 2889 | 34659 | 100 |

<sup>1</sup> Please note that all numbers less than five have been suppressed in line with patient confidentiality and if there is only one number <5 in a category then two numbers will be suppressed at the next level.

**Table 5: Stepping Hill ED: Total assault attendances by gender, arrival mode and age group, April 2012 to March 2013<sup>1</sup>**

| Gender              | Assault attendees (n=1,201) |    | All injury attendees (n=34,659) |
|---------------------|-----------------------------|----|---------------------------------|
|                     | n                           | %  | %                               |
| Male                | 832                         | 69 | 53                              |
| Female              | 369                         | 31 | 47                              |
| <b>Arrival mode</b> |                             |    |                                 |
| Ambulance           | 432                         | 36 | 19                              |
| Other               | 769                         | 64 | 81                              |
| <b>Age group</b>    |                             |    |                                 |
| 0 - 4               | ***                         | 0  | 7                               |
| 5 - 19              | 287                         | 24 | 25                              |
| 20 - 34             | 537                         | 45 | 22                              |
| 35 - 49             | 279                         | 23 | 17                              |
| 50 - 64             | 77                          | 6  | 12                              |
| 65 plus             | <20                         | 2  | 17                              |

Published August 2013

Jennifer Brizell (TIIG researcher)

Centre for Public Health, Faculty of Health and Applied Social Sciences, Liverpool John Moores University

2<sup>nd</sup> Floor, Henry Cotton Campus, 15-21 Webster Street, Liverpool, L3 2ET

Tel: 0151 231 4500 Email: [j.s.brizell@ljmu.ac.uk](mailto:j.s.brizell@ljmu.ac.uk)

Website: [www.tiig.info](http://www.tiig.info) (please note all data requests should be made through the TIIG website)

<sup>1</sup> Please note that all numbers less than five have been suppressed in line with patient confidentiality and if there is only one number <5 in a category then two numbers will be suppressed at the next level.